

Technical rider Alt-Escape

Length 50-60 minutes
revision 3/2/2026

Summary	2
Technical crew Requirements	2
Equipment provided by the venue	3
<i>Sound requirements</i>	3
<i>Lighting Requirements</i>	3
<i>Others Requirements</i>	3
<i>Other Technical Details</i>	3
Equipment provided by the artists	4
Standard Schedule	5
stage plot	6
lighting plan	7
Photos	8

SUMMARY

(SEE plans and photos)

Initial : _____

- performance area : W 9.14m (30') x D 7.62m (25') x H 5.49m (18')
- wings : 2.14m (7')
- 9 video projectors
- 1 house sound system
- 1 subwoofer
- 1 central video projection cyclo on stage (9.14m(30') x 4.88m(16'))
- 2 transparent projection retractable cylinders
- 8 mobile televisions on stage
- sensors system underneath dance mat, on the back of the cyclo and on side booms
- 2 video computers (on stage, one behind backdrop, 1 stage right)
- 1 audio computer (on stage, stage right)
- musical instruments and controllers

A first meeting (phone or video conference) with the technical director of the venue is required prior to sign the contract to evaluate the feasibility of the show (with technical director's initials for every section).

A second meeting with the technical director of the venue is required to solve specific venue's technical issues at least one month before the show.

Initial : _____

TECHNICAL CREW REQUIREMENTS

for the performance :

- 3 stagehands for a scenery transition

we bring our own sound (and lighting operators?)

for the setup :

- 2 stagehands * 4h (video projectors, screen, cylinders)
- 2 technicians * 12h (lighting, sound)

EQUIPMENT PROVIDED BY THE VENUE

Initial : _____

Sound requirements

- house sound system
- 2 loudspeakers at both sides or back of the audience (for a surround effect, optional)
- 1 subwoofer
- 2 returns from the desk to the sound card
- 8 sends from soundcard to the desk (1/4" balanced outputs)
- 2 headsets similar to Shure Beta 53
- XLR cables (2x 100' and 10x 50')

Lighting Requirements

- 14 colorados
- 8 Altamn Spectra (optional)
- 2 Iekos RGB (26°) *junior*, Chauvet Pro Ovation E-2FC or equivalent

Others Requirements

- 1 HD video projector 14k lumens (min 12k) that can cover our projection cyclo from front
- fog machine
- Smoke machine (optional)
- 2 booms 2.44m(8')H on stage(for side video projectors)
- 2 booms 2.44m(8')H on each side of the backdrop
- pipe 9.14m (30') to rig the backdrop if not directly installed on a pipe
- It is preferable to provide one electrical circuit for each video projector

Other Technical Details

- Every video signals will be routed from the computer on stage stage right
- We need to run a DMX link from the computer located stage left to the columns and the spotlights (cut-outs) within the columns.
- We need a minimum of 5.5m(18') height on the stage
- We use lasers 500mw in the show that we do not point toward the audience
- We need an ethernet link between the sound desk and the stage

EQUIPMENT PROVIDED BY THE ARTISTS

Initial : _____

- 2 video projectors Optoma WU515
- 6 video projectors Panasonic PT-DZ680E, lenses 0.7 and 0.9
- mounts, pipes and cheeseboroughs cf. photos
- 6 cables 150' SDI video with HDMI converters
- 3 cables 50' HDMI
- 3 cables 50' SDI
- 2 video projection retractable cylinders \varnothing 6', height 18'
- 2 square risers 3' with wheels blocking system
- 2 in-ear wireless monitoring system (Shure PSM300)
- 1 projection cyclo 9.14m(30')W x 4.88m(16')H
- 2 computers
- 1 router and ethernet switches
- 6 electronic drum pads with stand
- 1 floor tom \varnothing 16 inch with stand
- 1 microphone ATM-35 (floor tom)
- soundcard MOTU Udalite mk3
- 8 mobile televisions with sensors and 500mW lasers
- adapters XLR-1/4" balanced
- sensors system underneath dance mat and on the back of the cyclo
- light sensors system on side booms
- 8 side booms 3.66m(12')H on stage
- White mat covering 9.14m (30')W x 6.1m(20')D
- 1 music stand

STANDARD SCHEDULE

Initial : _____

Please note that this schedule is for information purposes only - the schedule can be adjusted.

8am to 12pm : unloading, rigging light, backdrop, cylinders, video projectors

12pm to 1pm : pause

1pm to 3pm : light focus, video focus

3pm to 4pm : audio patch, video patch, light intensities, setup instruments/sensors/computers

4pm to 5pm : setup instruments, video mapping

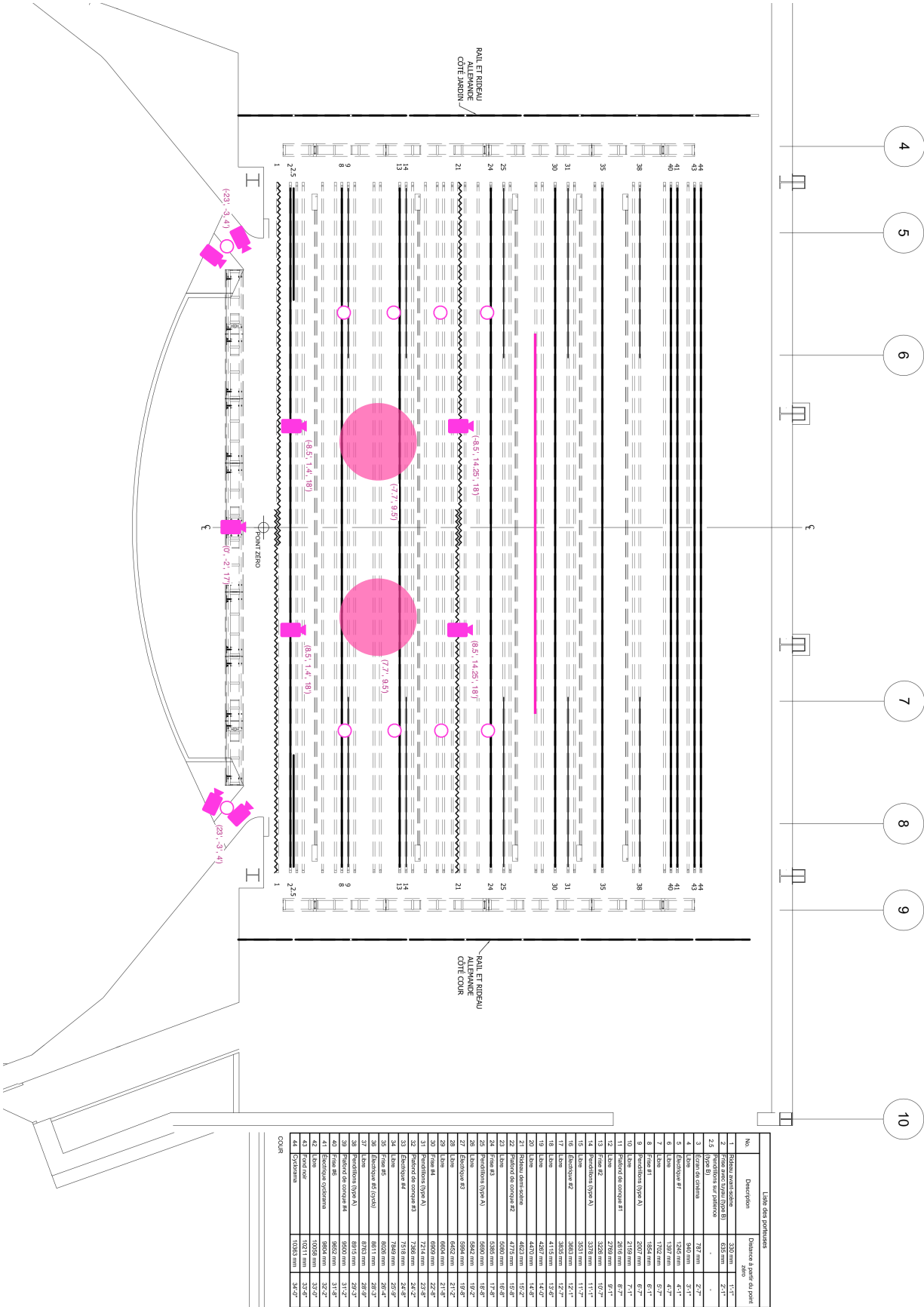
5pm to 6pm : pause

6pm to 8pm : sound check, dress rehearsal

Plan 3 hours for strike

STAGE PLOT

Initial : _____



LIGHTING PLAN

ALT+ESCAPE VDO PHASE

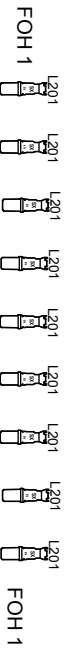
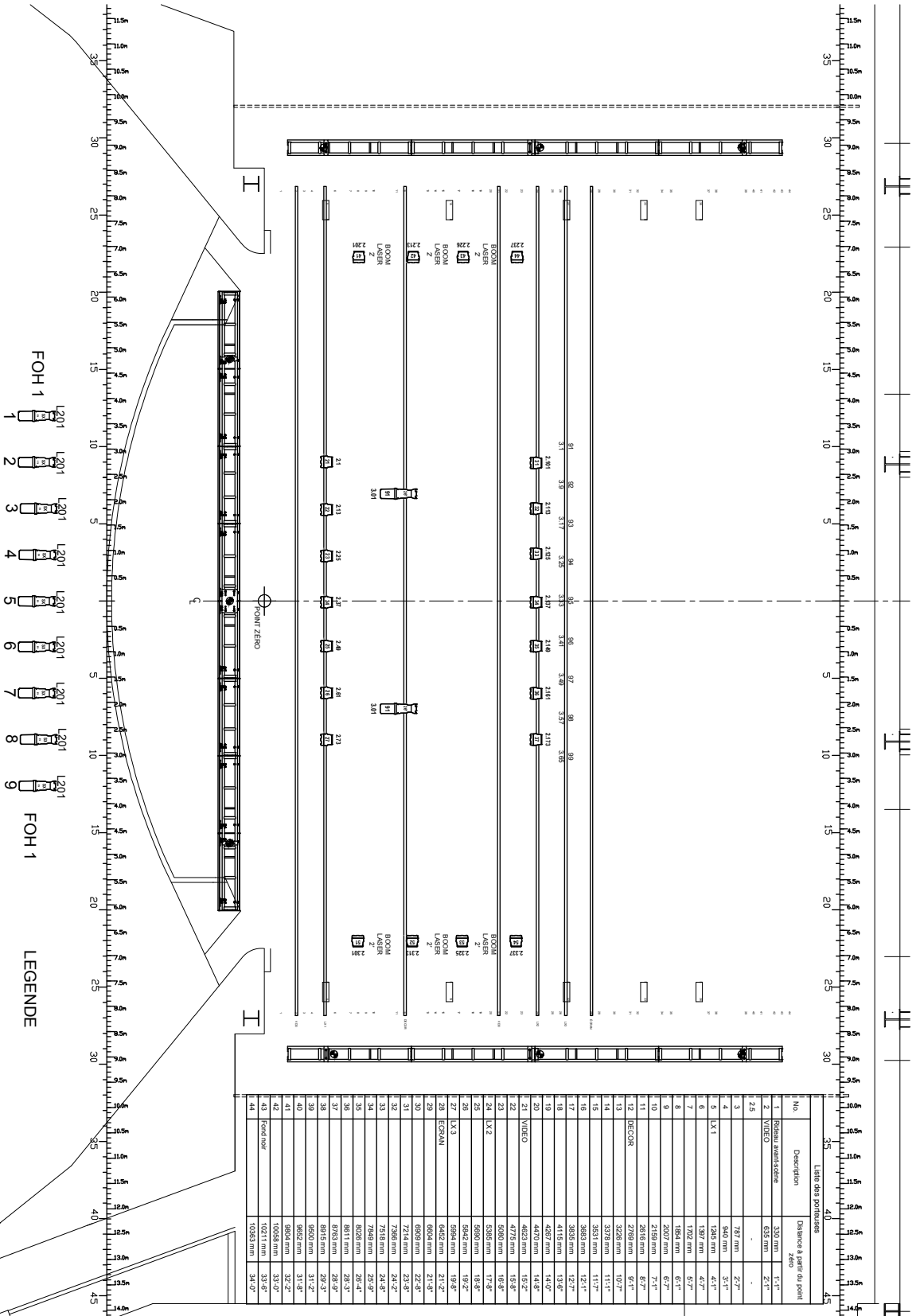
SALLE
MAURICE OBREADY

9 x
JULIAT 614 SX

2 x
Ovation E910 -- Mode 3 (3)

22 x
Colorado 2 Zoom Tour -- Mode TOUR (12)

9 x
Altman spectria 200 Mode 606 (8)



LEGENDE

9 x Altman spectria 200 Mode 606 (8)

22 x Colorado 2 Zoom Tour -- Mode TOUR (12)

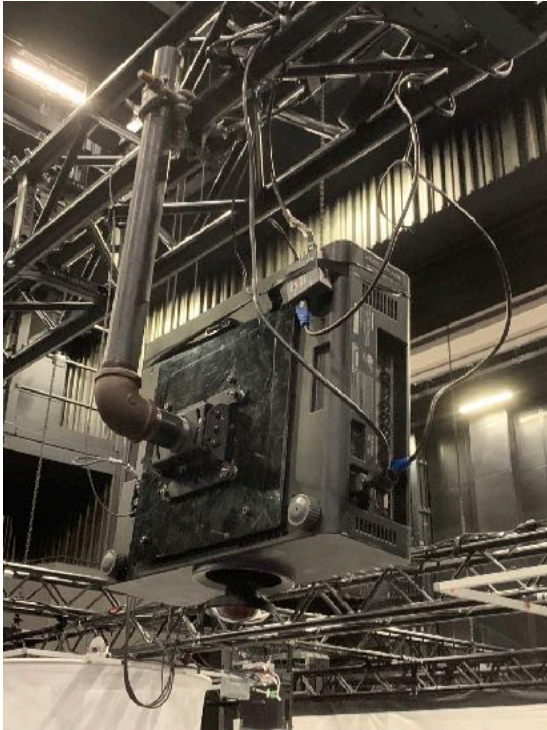
2 x Ovation E910 -- Mode 3 (3)

9 x JULIAT 614 SX

No.	Description	Distance à partir du point zéro
1	POISSON avant scène	330 mm 1'-11"
2	VUENO	630 mm 2'-1"
2-3		-
3		787 mm 2'-7"
4	LX1	940 mm 3'-1"
5	LX1	1265 mm 4'-1"
6	LX1	1370 mm 4'-5"
7	LX1	1864 mm 6'-1"
8		2007 mm 6-7"
9		2159 mm 7-1"
10		2616 mm 8-7"
11		2789 mm 9-1"
12	PECOR	3226 mm 10-7"
13		3378 mm 11-1"
14		3581 mm 11-7"
15		3683 mm 12-1"
16		3835 mm 12-7"
17		4115 mm 13-6"
18		4267 mm 14-0"
19		4630 mm 15-2"
20	VUENO	4776 mm 15-8"
21		4878 mm 16-2"
22		5080 mm 16-8"
23		5385 mm 17-8"
24	LX2	5842 mm 19-2"
25		5994 mm 19-8"
26		6462 mm 21-2"
27	LX3	6604 mm 21-8"
28	ECRAN	6609 mm 21-8"
29		6909 mm 22-8"
30		7214 mm 23-8"
31		7366 mm 24-2"
32		7518 mm 24-8"
33		8299 mm 27-3"
34		8599 mm 28-3"
35		8611 mm 28-5"
36		8763 mm 28-9"
37		8915 mm 29-3"
38		9067 mm 29-7"
39		9500 mm 31-2"
40		9652 mm 31-8"
41		9804 mm 32-2"
42		10056 mm 33-4"
43	Fond noir	10211 mm 33-8"
44		10363 mm 34-2"

PHOTOS

video projectors rig



sensors system on sides



Used lasers



Columns rig



Video Phase | videophase.net
Julien-Robert : +1-514-553-9147 | info@videophase.net